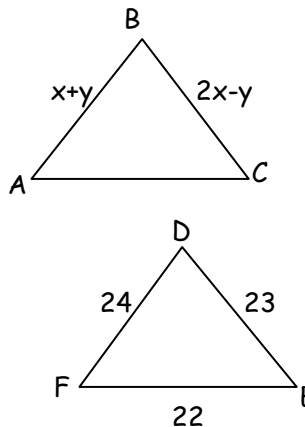


Strand: Geometric and Spatial Relationships		Missouri CLE
Power Standard: I will apply properties, postulates, and theorems to classify triangles and to prove pairs of triangles congruent.		
Kid-Friendly Objective: I will apply properties of congruent triangles.		
Score 4.0	In addition to Score 3.0, in-depth inferences or applications that go beyond what was taught. For example, the student may: *Given a congruence statement, use a system of equations to solve for missing side and angle measures involving pairs of congruent triangles.	
	3.5	In addition to 3.0 performance, in-depth inferences and applications with partial success.
Score 3.0	The student will: *Given a congruence statement, solve for missing side and angle measures involving pairs of congruent triangles. The student exhibits no major errors or gaps in the learning goal (complex ideas and processes).	
	2.5	No major errors or gaps in 2.0 content and partial knowledge in 3.0 content
Score 2.0	The student will: *Given a diagram of a pair of congruent triangles, write a congruence statement and list the pairs of corresponding parts. The student exhibits no major errors or gaps in the simpler details and processes.	
	1.5	Partial understanding of the 2.0 content and some of the 3.0 content.
Score 1.0	With help, a partial understanding of the 2.0 content and some of the 3.0 content.	
	0.5	With help, a partial understanding of the 2.0 content and none of the 3.0 content.
Score 0.0	Even with help, no understanding or skill demonstrated.	

5/24/2012 1:45:25 PM

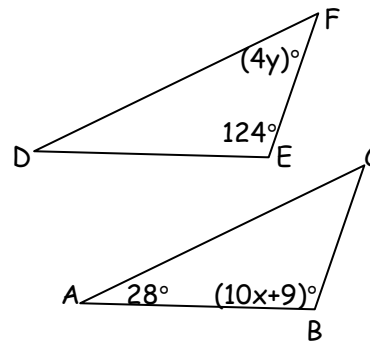
4.0 Example Assessment Items

Given $\triangle ABC \cong \triangle DEF$, set up equations and solve for each variable.



3.0 Example Assessment Items

Given $\triangle ABC \cong \triangle DEF$, set up equations and solve for each variable.



2.0 Example Assessment Items

Use the diagram at the right to write a congruence statement. Then identify all pairs of congruent corresponding parts.

